



GE Aerospace



SOFTWARE AS A SERVICE

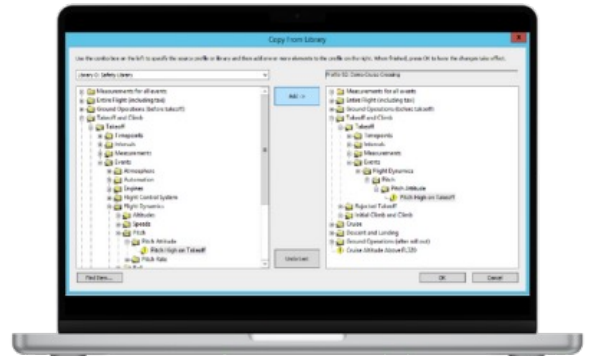
APM Editor

APM Editor is a powerful analytics workbench that enables an EMS user to build and modify their own analyses on any data available in EMS. Users can copy from any of our pre-built libraries of analytics to make their own studies or simply modify what's already included. This saves time and standardizes results, so different departments can all be working from a common set of analytics. Data can be processed and re-processed as necessary with the capacity to handle many thousands of flights per hour.

How It Works

The libraries of content that GE Aviation Digital maintains within EMS (including safety, fuel, flight operations, and others) are made fully visible via the APM interface. Users can either copy pre-existing content (theirs, ours, or as shared with fellow users) or build new definitions entirely from scratch, all done using our simple visual editor. No coding is required, all changes are saved with version control, and there are no limits set on what data can be processed or reprocessed. Results can be segregated by user security, for example enabling the safety team to study risk while engineering looks into mechanical issues.

Customers may choose to build a modified, parallel version of the safety library to track a different definition of events. Or, they might want to create an event to detect company-specific SOP compliance, study maintenance or engine trends, or devise something else altogether. APM Editor is the same tool our data scientists use to develop our home-grown analyses, and customers with access to it have almost limitless power and flexibility to create new measurements or events.



Features and Benefits

- Full customization of flight analytics—create new events, measurements, timepoints, and parameters
 - Easy-to-use interface without any coding skills necessary
 - Can process or reprocess thousands of flights per hour
 - Includes access to the Flight Data Warehouse to add or modify parameters and user constants
- Fully supported by GE's data science experts