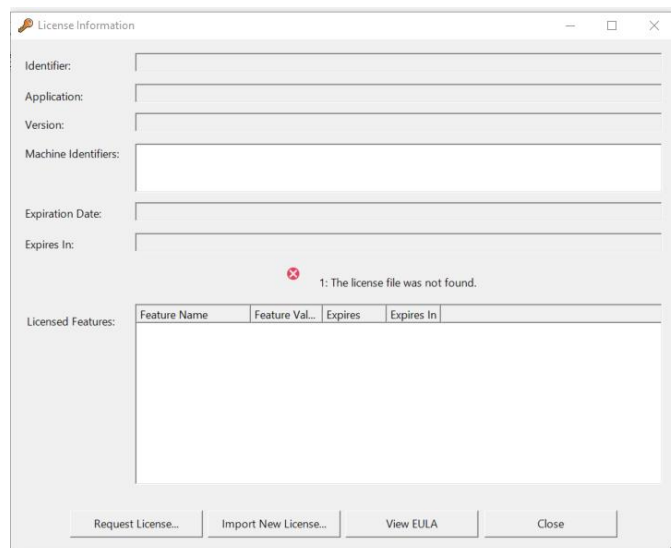




Follow these steps install the ADDT:

1. Download the [Adaptable Datalink Definition Tool \(ADDT\)](#).
2. Click on the “Save” button when prompted and provide a location on your local computer for the file to be downloaded.
3. Double click on "ADDT_setup.exe" to run the installation tool.
4. Follow the prompts of the setup wizard:
 1. Read and accept the End User Software License Agreement.
 2. Click “Next>”.
 3. Select the Destination Location for the ADDT by clicking the “Browse...” button or accept the default location which is C:\Program Files (x86)\GE Aviation Systems LLC\ADDT.
 4. Click “Next>”.
 5. Confirm “Create a desktop shortcut” is checked if you want to create a desktop shortcut.
 6. Click “Next>”.
 7. Click “Install”.
 8. Click “Finish”.
5. You will be prompted to request a license file. Select “Request License...”.



1.

2. Complete the form by typing your Company Name and Company Country.

Request License

Application: ADDT

Application Version: 004

Machine ID: BOFA014B

Company Name: [Empty]

Company Country: [Dropdown]

* Licenses are typically issued within one business day.

Submit via Email... Copy to Clipboard Close

- 3.
4. Click “Copy to Clipboard”.
5. Submit your license file request using the contact us form. Navigate to our Contact Us form and then paste the information into the description field on the Contact Us form.
6. When you receive the license file via email, save it to your desktop or a location of your choice.
 1. Go to the location you chose in step 5.2 and double click “ADDT_setup.exe”.
 2. Click “Import License...”.
 3. Browse to the license file that was saved to your desktop or other location.
7. The ADDT is now ready to use.
8. The Help file contains a User Manual which provides instructions for using the tool.

Return to the [Database Services Home Page](#).

Contact us with any questions.